

STUDENT CHAPTER OF SIAM MAGDEBURG

ransformer station operated by the company 50Hertz
our friends from the GAMM/SIAM Student Chapter Berlin
Neuenhagen we had the opportunity to listen to interesting

or transmission system operators in Germany. About 18 million people
the network operated by 50Hertz. The increasing amount of
nmon European power grid provide interesting challenges.

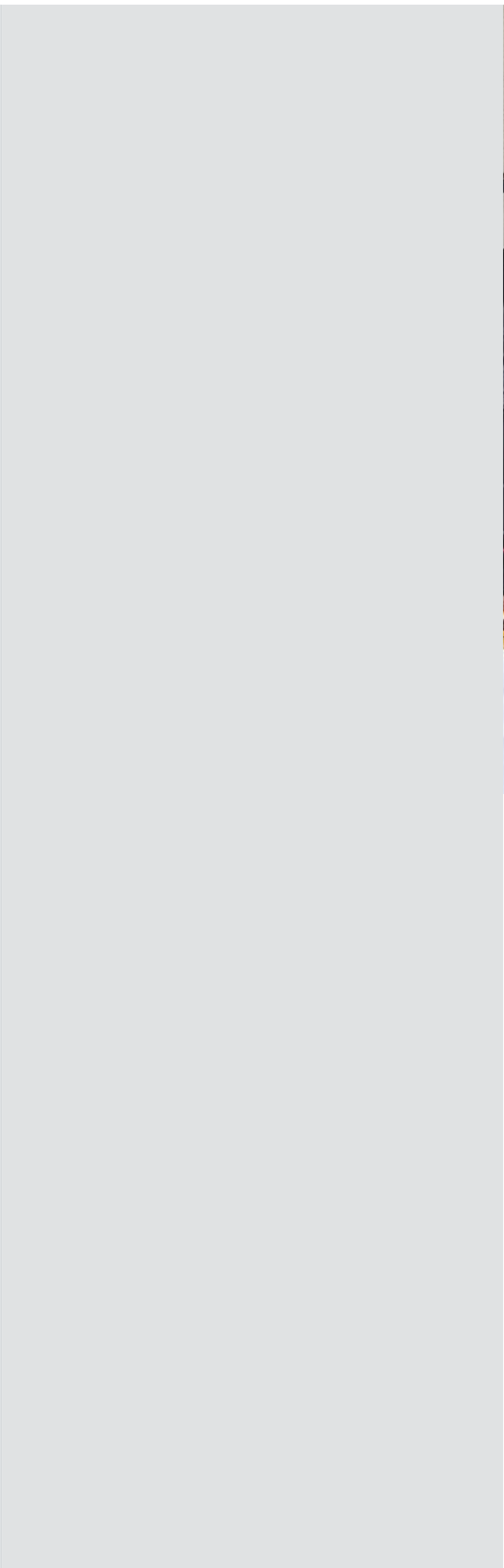
s plays in the business of the company. The mathematical modelling
n be increased by using optimization techniques. On the one hand
major market developments. On the other hand short term predictions
s is where techniques of model order reduction become interesting.

ield of strategic network planning. Here, it is important to guarantee t
o intercept any possible malfunction.

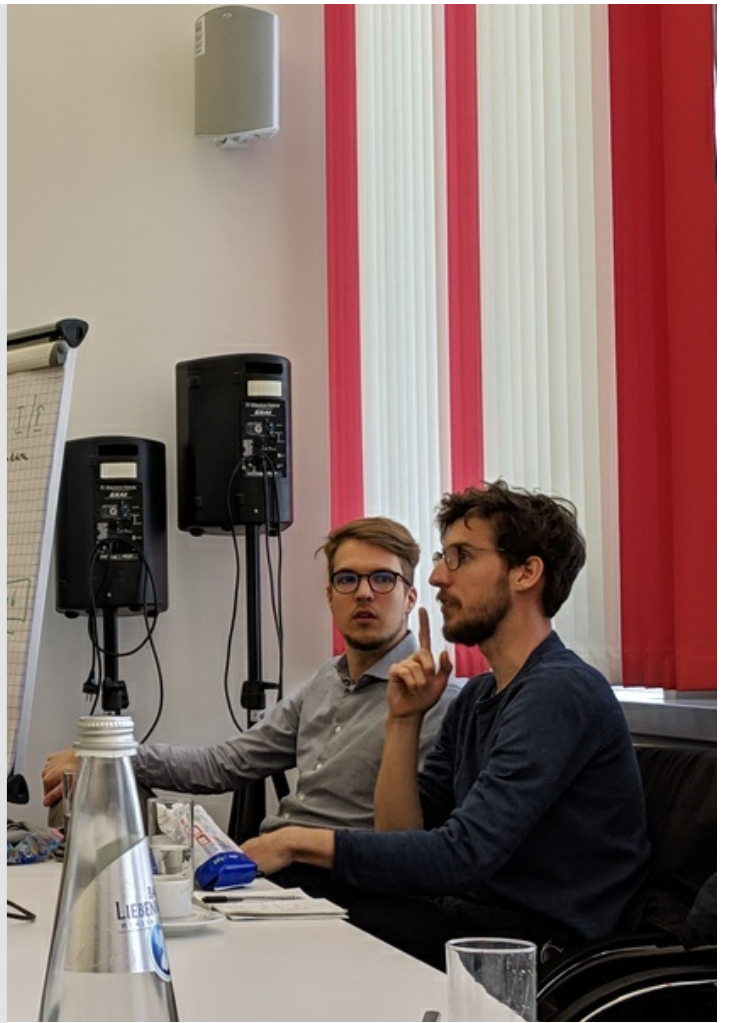
ransformer station. We had the opportunity to experience the massiv
thematics is often represented by a node in a graph, we can now

coffee and cake. We had the opportunity to exchange our thoughts on
and student life.



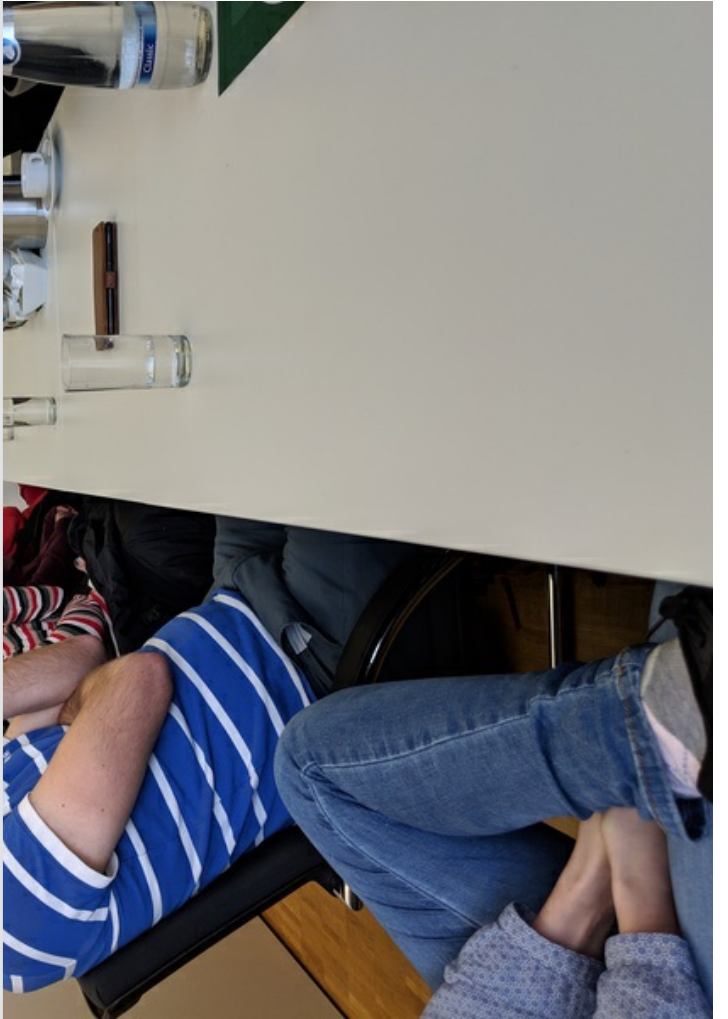


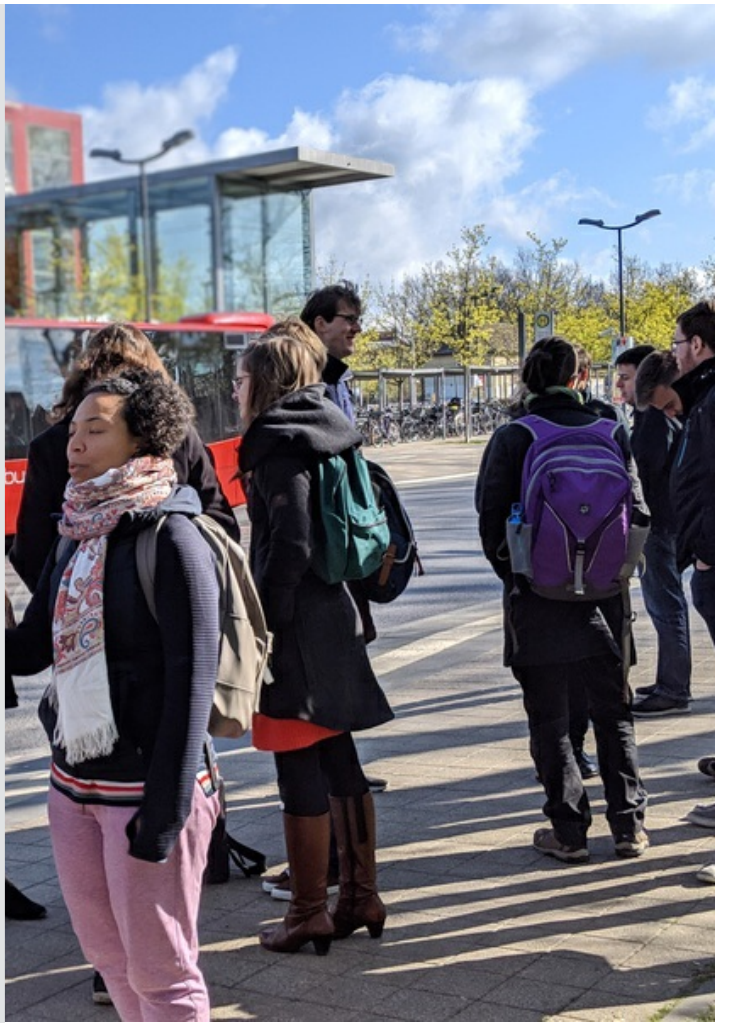












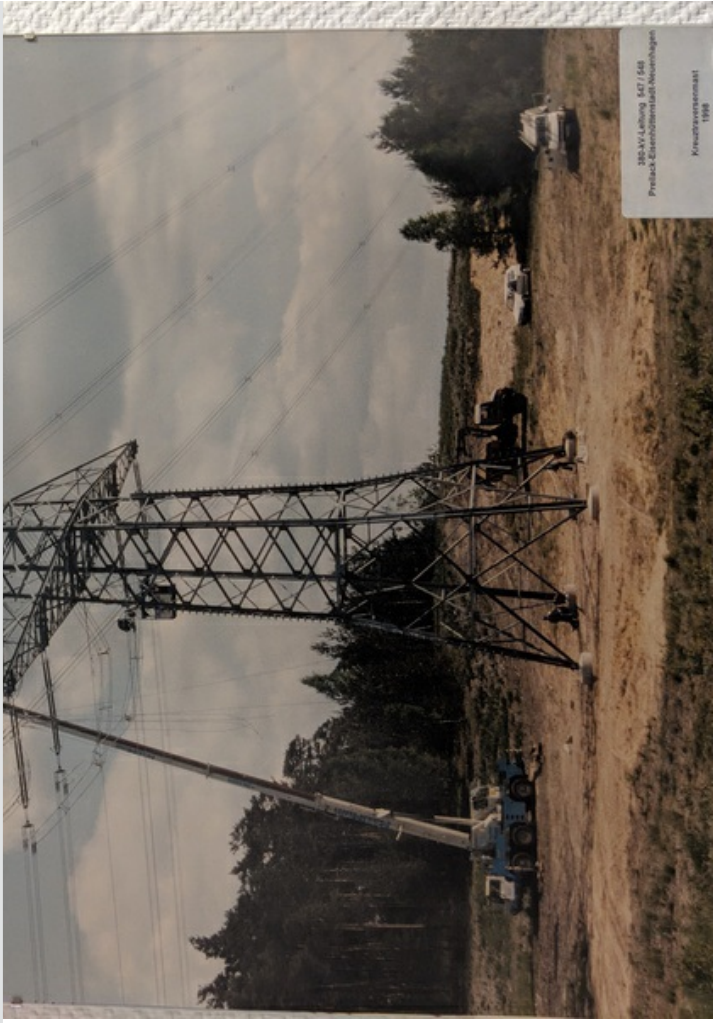


Regionalzentrum
Mitte

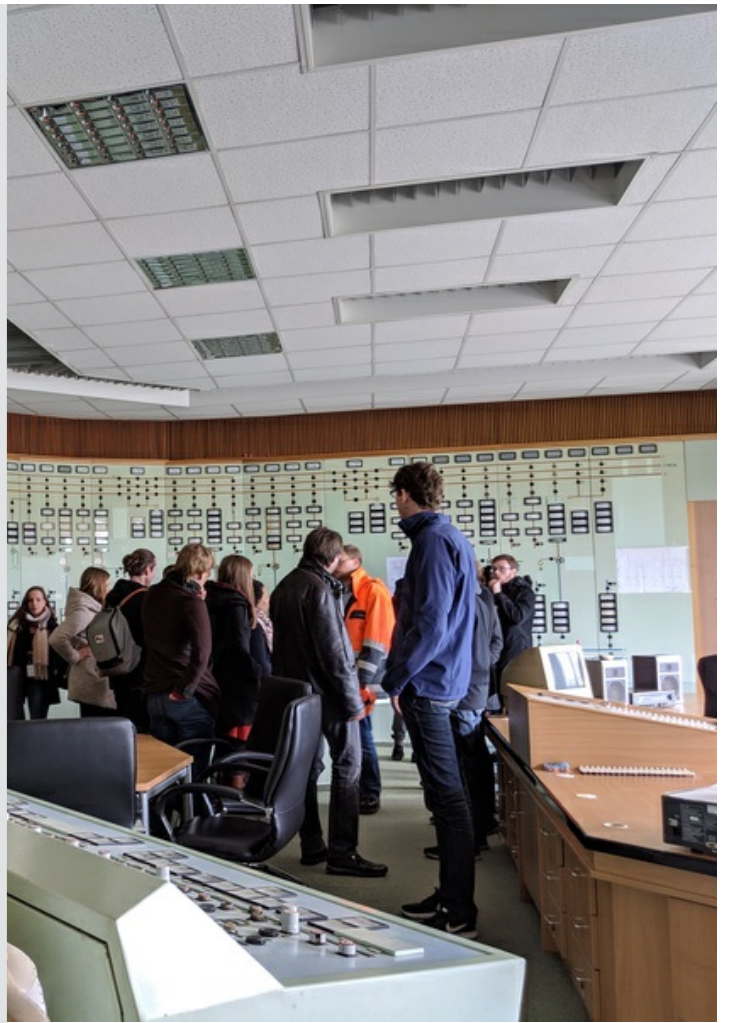
Umspannwerk
Neuenhagen

Systemführung



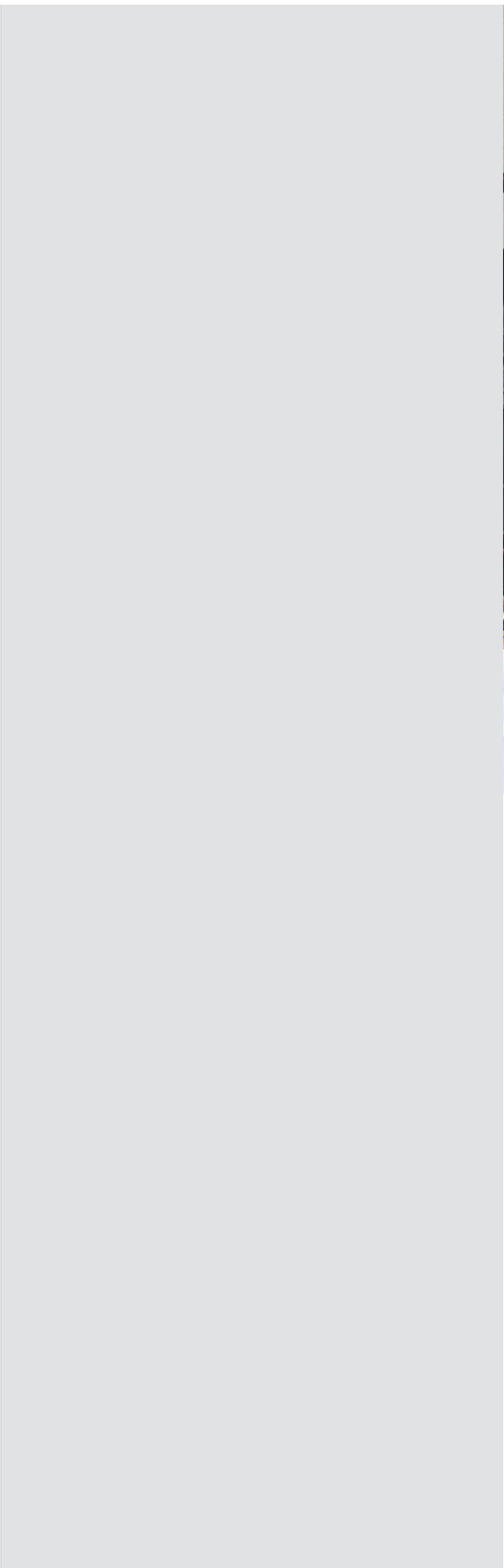


380-VV-Leitung 447 / 548
Preisach-Eisenbahnstraße Rosenheim
Kreuzturmgerüst
1998

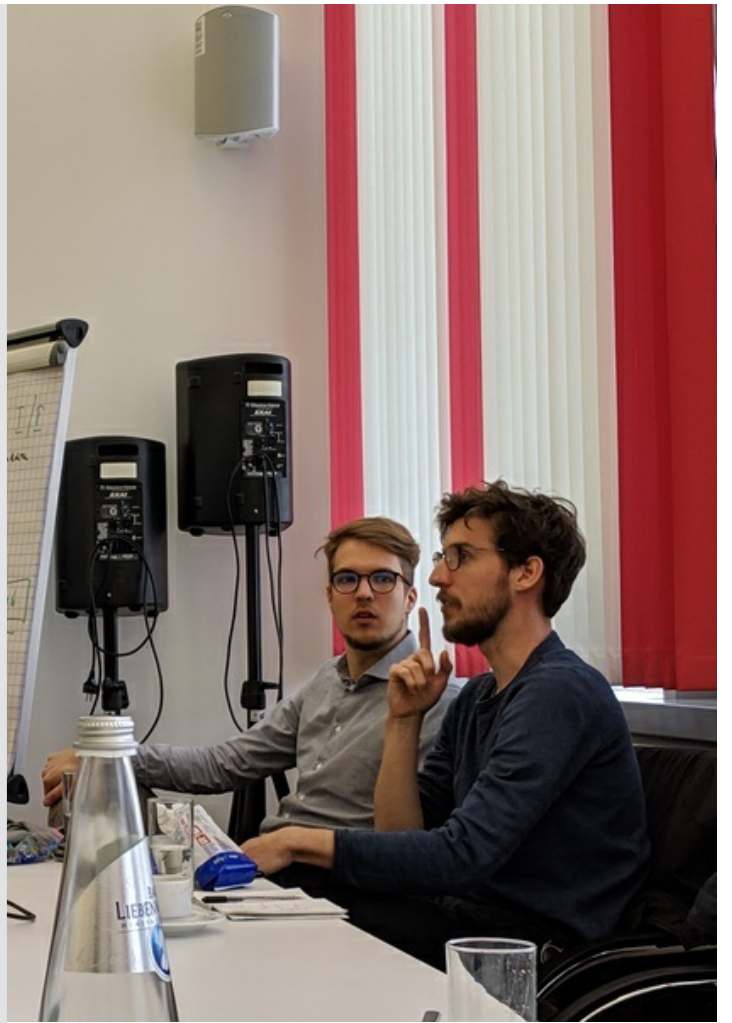








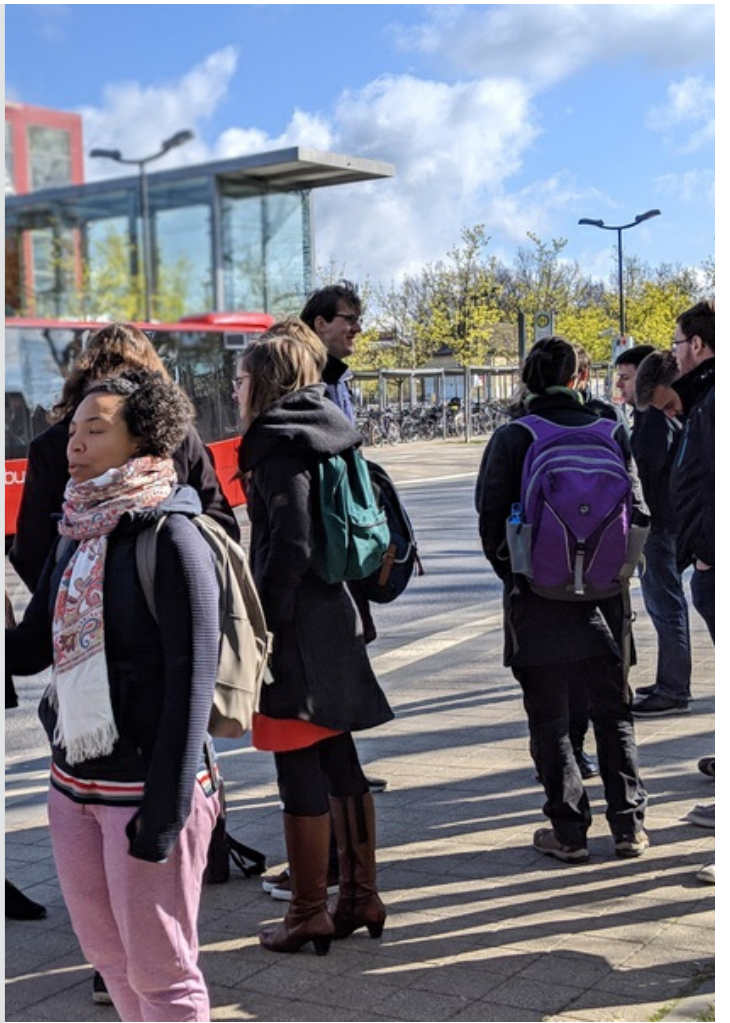












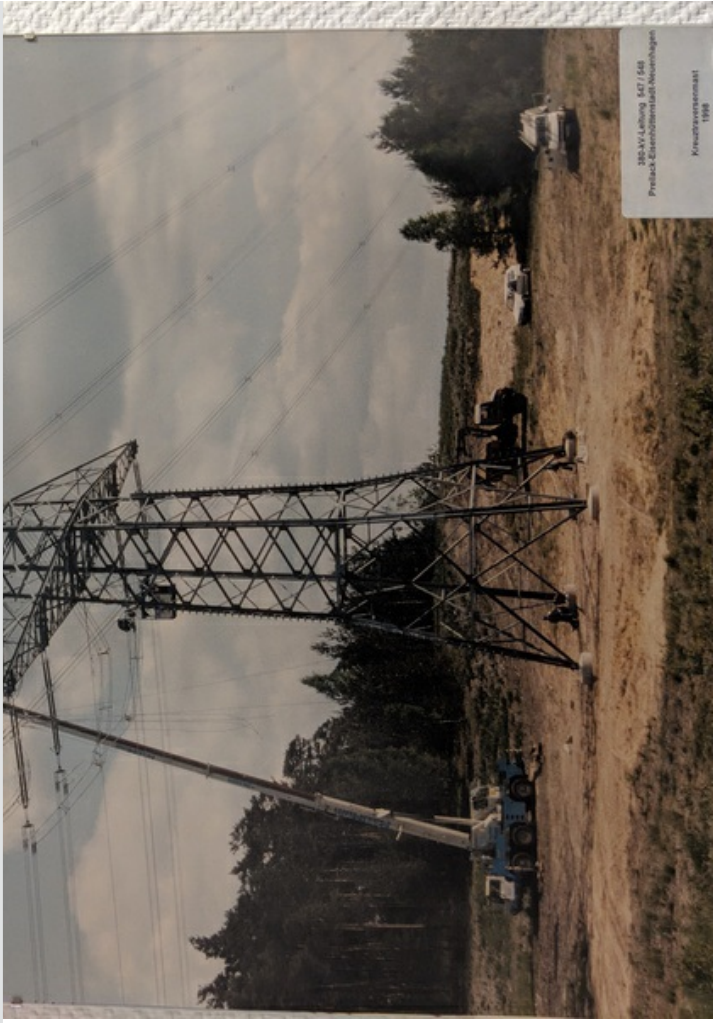


Regionalzentrum
Mitte

Umspannwerk
Neuenhagen

Systemführung





380-VV-Leitung 447 / 548
Preisack-Eisenbahnstraße Heerdingen
Kreuzfahrerpark
1998





News



15.02.2024

Seminar Prof. Dr.-Ing. Daniel Juhre

06.11.2023

Nerd Nite 2023

22.09.2023

Naturkundemuseum

> more...

Nerd Nite Magdeburg ▶

Become a member ▶



MAX PLANCK INSTITUTE
FOR DYNAMICS OF COMPLEX
TECHNICAL SYSTEMS
MAGDEBURG



OTTO VON GUERICKE
UNIVERSITÄT
MAGDEBURG